



# 44<sup>th</sup> AUSTRALIAN TASAR CHAMPIONSHIP

30<sup>th</sup> December 2016 to 7<sup>th</sup> January 2017

## SAILING INSTRUCTIONS



**Organising Authority:**  
**Tasar Association of New South Wales**  
In conjunction with the  
Port Stephens Sailing and Aquatic Club

# 44<sup>th</sup> Australian Tasar Championship

## **ORGANISING AUTHORITY AND VENUE**

On behalf of the Australian Tasar Council, the 44<sup>th</sup> Australian Tasar Championship are organised by the Tasar Association of NSW in conjunction with the Port Stephens Sailing and Aquatic Club.

The venue shall be the Port Stephens Sailing and Aquatic Club, Seaview Crescent, Soldier's Point, NSW and the racing area shall be the waters of Port Stephens. (See Attachment 1)

## **1. RULES**

- 1.1. The Championship shall be governed by the 'rules' as defined in the Racing Rules of Sailing 2013-2016.
- 1.2. The prescriptions and special regulations of Yachting Australia Part 2 shall apply.
- 1.3. RRS Appendix P shall be changed as follows: P2.3 is deleted and the words 'or subsequent' are added after the word 'second' in P2.2.
- 1.4. Discretionary Penalties will apply to those Sailing Instructions (SIs) marked with a [DP].
- 1.5. Standard Penalties may be applied by the Race Committee without a hearing to those SIs marked with a [SP].

## **2. ADDITIONAL IDENTIFICATION**

While racing, boats shall display bow numbers. The Race Committee shall provide the numbers and instructions for their use.

## **3. NOTICES TO COMPETITORS**

All notices to competitors shall be posted on the Official Notice Board located adjacent to the Regatta Office on the upper level of the PSSAC clubhouse and may also be posted on the event website: [www.tasar.org](http://www.tasar.org). It is the responsibility of any competitors choosing to launch from other sites to be aware of Notices posted.

## **4. CHANGES TO THE SAILING INSTRUCTIONS**

Any change to the SIs shall be posted before 1100 hours on the day it will take effect, except that any change to the schedule of races will be posted by 1900 hours on the day before it will take effect.

## **5. SIGNALS MADE ASHORE**

- 5.1. Signals made ashore shall be displayed from the official flagpole located on the PSSAC clubhouse balcony. Signals may be repeated in the main rigging area. It is the responsibility of competitors choosing to launch from other sites to be aware of signals made ashore.
- 5.2. When flag AP is displayed ashore, '1 minute' is replaced with 'not less than 30 minutes' in the Race Signal AP (postponement).
- 5.3. When the Race Committee believes that the conditions, safety and support mechanisms are suitable and that racing should proceed as per the schedule it shall display a Green Flag ashore. No boat shall go afloat until this flag is displayed. [DP]

## 6. FORMAT OF RACING

- 6.1. The regatta shall consist of up to 10 races.
- 6.2. The regatta shall consist of a Qualifying Series and may be followed by a Final Series. In the absence of a Final series the Regatta shall be decided by the Qualifying Series.

### 6.3. Qualifying Series

- (a) Boats sailing may be divided into two (2) coloured divisions when total entries exceed 70 boats.
- (b) The Race Committee will carry out the initial allocation into divisions after 1700 on 31<sup>st</sup> December.
- (c) For subsequent daily reallocations, boats will be reassigned to fleets after each day of racing. The series scores for reassignment will be calculated for those races completed by all fleets. Assignments will be based on the ranking available at 1800 that day regardless of protests or requests for redress not yet decided.
- (d) Reassignments will be made as follows:

| Rank in series  | Fleet Assignment |
|-----------------|------------------|
| 1 <sup>st</sup> | Red              |
| 2 <sup>nd</sup> | Blue             |
| 3 <sup>rd</sup> | Blue             |
| 4 <sup>th</sup> | Red              |
| 5 <sup>th</sup> | Red              |
| 6 <sup>th</sup> | Blue             |
| 7 <sup>th</sup> | Blue             |
| 8 <sup>th</sup> | Red              |
| 9 <sup>th</sup> | Red              |
| And so on       |                  |

### 6.4. Final Series

- (a) Allocation of boats for the Final series will be based on the results of the Qualifying Series.
- (b) The Final Series fleets will be, as nearly as possible, of equal size but so that the Silver fleet shall not be larger than the Gold fleet.
- (c) Any recalculation of Qualifying Series ranking after boats have been assigned to Finals Series fleets will not affect the assignments except that a redress decision may promote a boat to a higher fleet.

### 6.5. Identification of coloured fleets [SP]

All boats shall display a coloured ribbon (corresponding to the colour of their division flag for that days sailing) attached, with not less than 25cm of ribbon free to fly, to the starboard shroud at approximately the height of the spreader bar. Ribbons of each applicable colour will be provided by the Organising Authority at registration. Sailors are responsible for ensuring they check their fleet assignment each morning and ensuring they attach the correct ribbon colour for that day.

## 7. SCHEDULE OF RACES

### 7.1. Racing Sessions are scheduled as follows:

| Event           | Day | Date                     | First Warning |
|-----------------|-----|--------------------------|---------------|
| Invitation Race | Sun | 1 <sup>st</sup> Jan 2017 | 15:00         |
| Race Day 1      | Mon | 2 <sup>nd</sup> Jan 2017 | 13:00         |
| Race Day 2      | Tue | 3 <sup>rd</sup> Jan 2017 | 13:00         |
| Race Day 3      | Wed | 4 <sup>th</sup> Jan 2017 | 13:00         |
| Reserve Day     | Thu | 5 <sup>th</sup> Jan 2017 |               |
| Race Day 4      | Fri | 6 <sup>th</sup> Jan 2017 | 13:00         |
| Race Day 5      | Sat | 7 <sup>th</sup> Jan 2017 | 11:00         |

- 7.2. Number of Races:
- (a) The total number of races scheduled is 10 races, with up to 3 races per day.
  - (b) The Reserve Day may be used for racing, if the minimum number of qualifying races (SI 19.2(a)) have not been completed by the end of racing on Wednesday 4<sup>th</sup> January.
- 7.3. To alert boats that a race or sequence of races will begin soon, the orange starting line flag will be displayed, with one sound, for at least five minutes before a warning signal is displayed.
- 7.4. On the last day of the regatta no warning signal will be made after 14:00.

## 8. DIVISIONAL IDENTIFICATION

8.1.

| <u>Qualifying Series Fleet</u> | <u>Final Series Fleet</u> | <u>Flag</u>       |
|--------------------------------|---------------------------|-------------------|
| Red                            | Gold                      | Numeral Pennant 1 |
| Blue                           | Silver                    | Numeral Pennant 2 |

8.2. The divisional flag will be displayed at or prior to the warning signal.

## 9. RACING AREA

Attachment 1 shows the location of the racing area.

## 10. THE COURSE

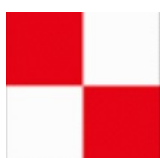
The diagram in Attachment 2 describes the course, the order in which marks are to be passed, and the side on which each mark is to be left.

## 11. MARKS

- 11.1. Marks 1, 2 and 3 will be inflatable orange conical buoys.
- 11.2. Mark 1(a) will be a danbuoy mark with an orange flag.
- 11.3. Mark 4 will be a Green inflatable cylinder with an orange band.
- 11.4. New marks as provided in accordance with Instruction 12, will be inflatable yellow cylindrical buoy with a black band.
- 11.5. The starting mark, where used, will be inflatable yellow conical buoy.
- 11.6. The finish mark will be a danbuoy with a blue flag.
- 11.7. A Race Committee boat signalling a change of a leg of the course is a Mark as provided in SI 13.2.

## 12. THE START

- 12.1. The Starting line shall be between the staff displaying an orange flag on the Race Committee start vessel at starboard end and the staff displaying an orange flag on the Race Committee vessel at the port end of the starting line or the port end starting mark.
- 12.2. Once a starting sequence has commenced, all boats not in sequence shall stay clear of the starting area. [DP]
- 12.3. A boat starting later than 4 minutes after her starting signal shall be scored Did Not Start (DNS) without a hearing. This changes RRS A4 and A5.
- 12.4. If flag U has been displayed as the preparatory signal, no part of a boat's hull, crew or equipment shall be in the triangle formed by the ends of the starting line and the first mark during the last minute before her starting signal. If a boat breaks this rule and is identified, she shall be disqualified without a hearing but not if the race is restarted or re-sailed or postponed or abandoned before the starting signal. This changes RRS 26, The scoring abbreviation for a flag U penalty is UFD. This changes RRS A11.



### 13. CHANGE OF THE NEXT LEG OF THE COURSE

- 13.1. To change the next leg of the course, the Race Committee will lay a new mark and remove the original mark as soon as practicable, the mark need not be in its new position before boats commence the leg to the mark.
- 13.2. Except at a gate, boats shall pass between the Race Committee boat signalling the change of course and the nearby mark, leaving the mark to port and the Race Committee boat to starboard. This changes RRS 28.

### 14. THE FINISH

The Finishing line shall be between staff displaying an orange flag on the Race Committee vessel at the starboard end of the line and the finishing mark at the port end of the line.

### 15. PENALTY SYSTEM

- 15.1. Discretionary Penalties apply for breaches of Class Rules. [DP]
- 15.2. Appendix P shall apply, changed as follows: P2.3 will not apply and P2.2 is changed so that it will apply to the second and any subsequent penalties.

### 16. TIME LIMITS AND TARGET TIMES

- 16.1. Time limits and target times (in minutes) are as follows:

| Time Limit | Mark 1 Time Limit | Target Time |
|------------|-------------------|-------------|
| 100        | 30                | 45          |

- 16.2. If no boat has passed Mark 1 within the Mark 1 time limit the race will be abandoned. Failure to meet the target time will not be grounds for redress. This changes RRS 62.1(a).
- 16.3. Boats failing to finish within 20 minutes after the first boat sails the course and finishes will be scored Did Not Finish (DNF). This changes RRS 35, A4 and A5.

### 17. PROTESTS AND REQUESTS FOR REDRESS

- 17.1. Protest forms are available at the Regatta Office. Protests and requests for redress or reopening shall be delivered there within the protest time limit.
- 17.2. The protest time limit is 60 minutes after the last boat has finished the last race of the day, or the Race Committee signals no more racing today, whichever is later.
- 17.3. Notices shall be posted no later than 30 minutes after the protest time limit to inform competitors of hearings in which they are parties or named as witnesses. Hearings will be held in the Jury Room located on level 1 of the PSSAC clubhouse.
- 17.4. Notices of protests by the Race Committee or Jury will be posted on the Official Notice Board to inform competitors according to RRS 61.1(b).
- 17.5. For the purpose of measurement rule protests (rule 64.3 (b)) the 'authority responsible' is the National Measurer appointed by Australian Tasar Council.
- 17.6. Breaches of Sailing Instructions marked 'DP' and 'SP' will not be grounds for a protest by a boat. This changes RRS 60.1(a).
- 17.7. On the last day of the qualifying series and on the last scheduled day of racing, a request for reopening a hearing shall be delivered:
- (a) within the protest time limit if the party requesting reopening was informed of the decision on the previous day;
  - (b) no later than 15 minutes after the party reopening was informed of the decision on that day. This changes RRS 66.
- 17.8. On the last scheduled day of racing a request for redress based on a jury decision shall be delivered no later than 30 minutes after the decision was posted. This changes RRS 62.2.
- 17.9. Decisions of the National Jury will be final as provided in RRS 70.5.

## **18. ARBITRATION**

- 18.1. An arbitration hearing will be conducted, at the discretion of the jury, for all protests which allege an infringement of a rule of Part 2, Part 4 or RRS 31. Such hearings will be held subsequent to the protest being lodged and prior to the protest hearing.
- 18.2. The time and place of arbitration will be decided by the arbitrator and such advice may be given verbally. One representative of each boat shall attend the arbitration hearing and no witnesses will be called. The arbitrator will decide the manner in which testimony is given.
- 18.3. After taking testimony at the arbitration hearing the arbitrator will make one of the following conclusions:
  - (a) The protest is not valid and the protestor may withdraw the protest.
  - (b) The matter shall proceed to a protest hearing. This may be because the protest involves rules other than Part 2 or RRS 31, or because the evidence is too complex or divergent to reach a reasonable and timely conclusion, or due to the apparent severity of the alleged infringement, or for any other reason decided by the Arbitrator.
  - (c) No rule was broken and the protestor may withdraw the protest.
  - (d) A rule was broken by one or more of the boats involved, the infringing boat(s) may accept a scoring penalty. RRS 44.1 is changed to permit a boat that has broken a rule of Part 2 to take a penalty after racing but prior to any protest hearing. Her penalty shall be a scoring penalty as calculated in RRS 44.3(c) equal to 30% of the number of entries in her division, but not worse than points equal to DSQ.
- 18.4. An arbitration hearing shall not be re-opened. No conclusion of an Arbitrator shall be subject to appeal or be grounds for redress.
- 18.5. Should the protest proceed to a protest hearing then the Arbitrator may be a member of the Jury. Any evidence given by an arbitrator during a protest hearing shall be given only in the presence of the parties to the hearing.

## **19. SCORING**

- 19.1. The series will consist of up to ten (10) races.
- 19.2. Where a qualifying and finals series is used:
  - (a) The qualifying series shall consist of a maximum of six (6) completed races, of which two (2) are required to be completed to constitute a qualifying series.
  - (b) The finals series shall consist of a maximum of four (4) completed races, of which one (1) completed race is required to constitute a regatta.
- 19.3. In the qualifying series:
  - (a) When less than five races are completed, a boat's series score shall be the total of her race scores;
  - (b) When five or six races are completed, a boat's series score shall be the total of her race scores excluding the worst score;
- 19.4. In the finals series:
  - (a) When less than four races are completed, a boat's finals series score shall be the total of her finals race scores;
  - (b) When four races are completed, a boat's finals series score shall be the total of her finals race scores excluding her worst score.
- 19.5. A boat's overall series score shall be the sum of her qualifying series score and her finals series score. The boats in the Gold finals fleet shall be ranked ahead of boats in the Silver finals fleet in overall standings.
- 19.6. A boat that did not start, did not finish, retired after finishing or was disqualified shall be scored points for the finishing place one more than the maximum number as per SI 19.8. This changes Rule A4.2.
- 19.7. Where a scoring penalty is applied, the number of places shall be the whole number (rounding 0.5 upward) nearest to 30% of the maximum number as per SI 19.8.
- 19.8. The maximum number for SIs 19.6 and 19.7 is:
  - (a) For races in the Qualifying Series one more than the maximum number of boats in any fleet.
  - (b) For races in the Final Series one more than the number of boats in her fleet.

- 19.9. During the Qualifying Series only races that have been completed by all fleets will be included in the series scoring.
- 19.10. To request the correction of an alleged error in a posted race or series results, a boat shall complete a Scoring Enquiry Form available at the Regatta Office.

## **20. SAFETY REGULATIONS**

- 20.1. Sign-on will open approximately 2hrs prior to the scheduled first warning signal of the day, or after a postponement ashore when flag AP is lowered.
- 20.2. Before leaving the beach and up to the warning signal of the race session each boat intending to race shall sign-on prior to any racing session. [SP]
- 20.3. Sign-off shall be completed within 45 minutes of the last boat finishing in the last race of the race session of their allocated class/fleet assignment. [SP]
- 20.4. A boat that retires from a race shall notify the Race Committee as soon as possible and shall also fill in the Early Retirement form available at the Regatta Office. [DP]

## **21. REPLACEMENT OF EQUIPMENT [DP]**

- 21.1. Substitution of damaged or lost equipment will not be allowed unless approved in writing by the Race Committee. Requests for substitution shall be made to the Race Committee at the first reasonable opportunity.
- 21.2. Substitution of damaged equipment may be permitted providing the damaged and substituting equipment has been inspected by the Race Committee and the relevant form has been filled in at the Regatta Office.
- 21.3. If the substitution was made on the water between races, both the damaged and the substituting pieces of equipment shall be presented to the Race Committee after the end of the day's racing. In this case, the substitution is subject to the approval of the Race Committee given retrospectively.

## **22. EQUIPMENT AND MEASUREMENT CHECKS [SP]**

- 22.1 The Race Committee may inspect a boat or equipment at any time for compliance with the Class Rules, the Notice of Race and these Sailing Instructions. Daily spot checks may be undertaken.
- 22.2 A boat when notified by the Race Committee or Jury on the water that it has been selected for measurement spot check shall sail immediately to the main rigging area following the last race of the day and report to the Measurer for inspection. [SP]

## **23. OFFICIAL AND ACCREDITED BOATS**

Official boats will be marked as follows:

|                |              |
|----------------|--------------|
| Jury Boats     | Flag 'J'     |
| Race Committee | PSSAC Burgee |

## **24. SUPPORT BOATS [DP]**

- 24.1. Support boats shall stay at least 100 metres outside racing laylines from the time of the preparatory signal until the finish of the last boat in any race, except when asked to assist by the Race Committee. Failure to comply with this Instruction may result in action being taken by the Race Committee against the support personnel and/or any boats supported by them.
- 24.2. When the wind is less than 10 knots support vessels shall not exceed 5 knots within 200m of the area where boats are racing. Additionally coach and support boats shall not exceed 5 knots and shall not create wake at any time when they are within 100m of the starting area. [DP]

## **25. RUBBISH DISPOSAL [DP]**

Rubbish may be placed aboard support and Race Committee boats.

## **26. PRIZES**

- 26.1. Prizes and trophies will be awarded as detailed in the Notice of Race.
- 26.2. Prizes will be awarded for 1<sup>st</sup>, 2<sup>nd</sup> and 3<sup>rd</sup> in Silver Fleet.
- 26.3. More prizes may be awarded at the discretion of the Organising Authority.

## **27. DISCLAIMER OF LIABILITY**

- 27.1. Competitors participate in the regatta entirely at their own risk and responsibility. See rule 4, Decision to Race.
- 27.2. The Organising Authority and any other party involved in the organisation of the Championship will, to the extent permitted by law, accept no liability whatsoever for any injury, damage, loss or claim, whether personal or material, incurred by or inflicted to participants before, during or after the Championship.

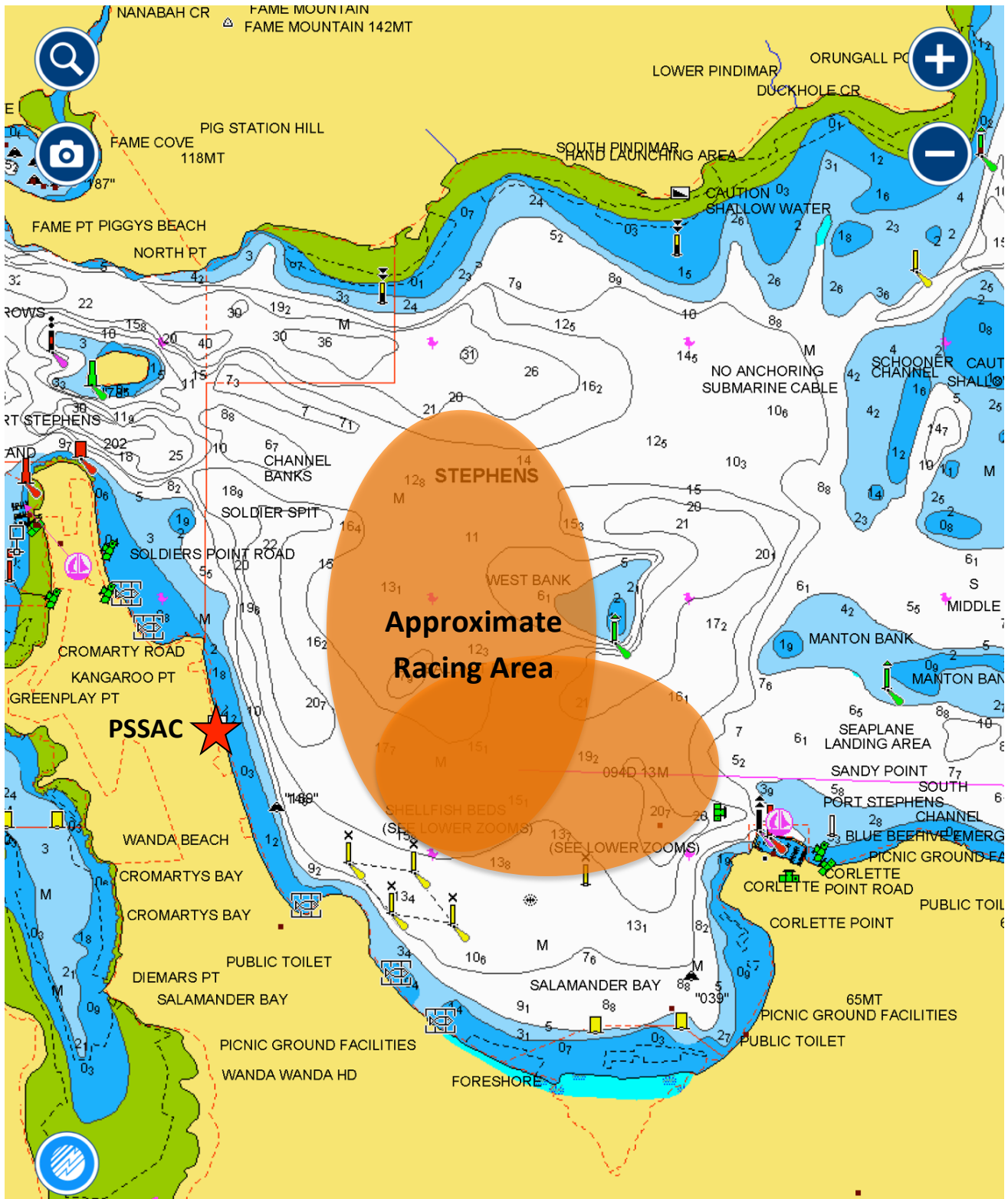
## **28. INSURANCE**

All boats shall have third party liability insurance cover of not less than AUD\$5,000,000. (Recommended AUD\$10,000,000 or the equivalent thereof in any other convertible currency) for any accident. All owners / competitors who sign the entry forms are deemed to have made a declaration that they hold such cover. Owners / competitors not holding this cover shall withdraw their entry. The skipper of each boat must be able to display proof of cover if requested to do so.



# Attachment 1: Course Areas

## Approximate Course Area locations and Course Area Allocations



## ATTACHMENT 2:

### COURSE DIAGRAMS

#### ALL MARK ROUNDING TO PORT

| Course | Description   |
|--------|---|
| T2     | Start – 1 – 2 – 3 – 1 – 4 – Finish 1                    |
| T2W    | Start – 1 – 2 – 3 – 1 – 4 – Finish 2                    |
| T3     | Start – 1 – 2 – 3 – 1 – 3 – 1 – 2 – 4 – Finish 1        |
| L2     | Start – 1 – 1a – 3 – 1 – 1a – 4 – Finish 1              |
| W2     | Start – 1 – 1a – 3 – 1 – 1a – 4 – Finish 2              |
| L3     | Start – 1 – 1a – 3 – 1 – 1a – 3 – 1 – 1a – 4 – Finish 1 |

